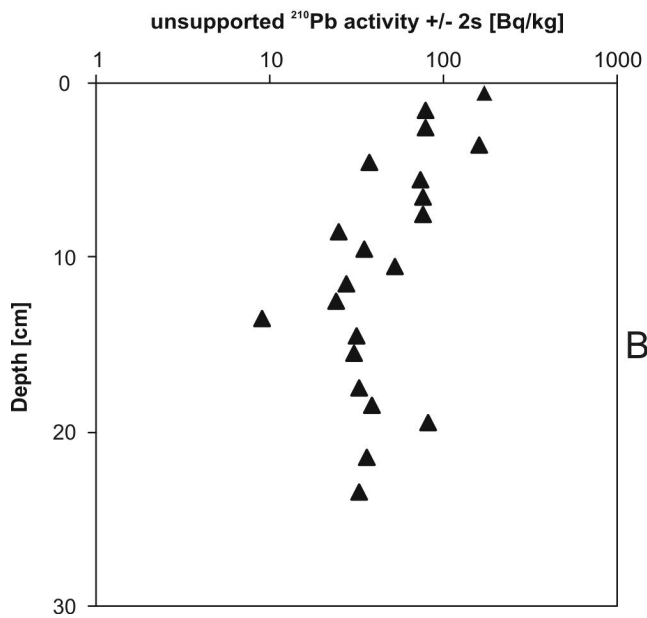
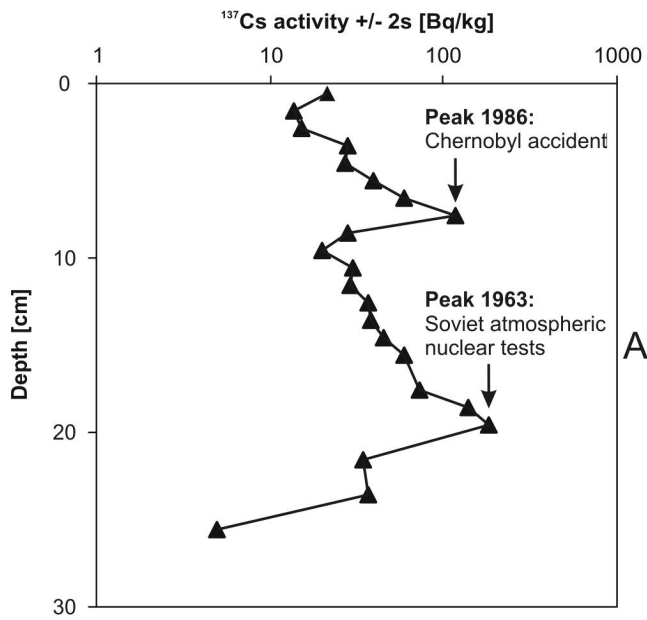


Supporting Information

Historical profiles of chlorinated paraffins and polychlorinated biphenyls in a dated sediment core from Lake Thun (Switzerland)

Saverio Iozza^{1,2}, *Claudia E. Müller*¹, *Peter Schmid*¹, *Christian Bogdal*¹, *Michael Oehme*^{2,*}

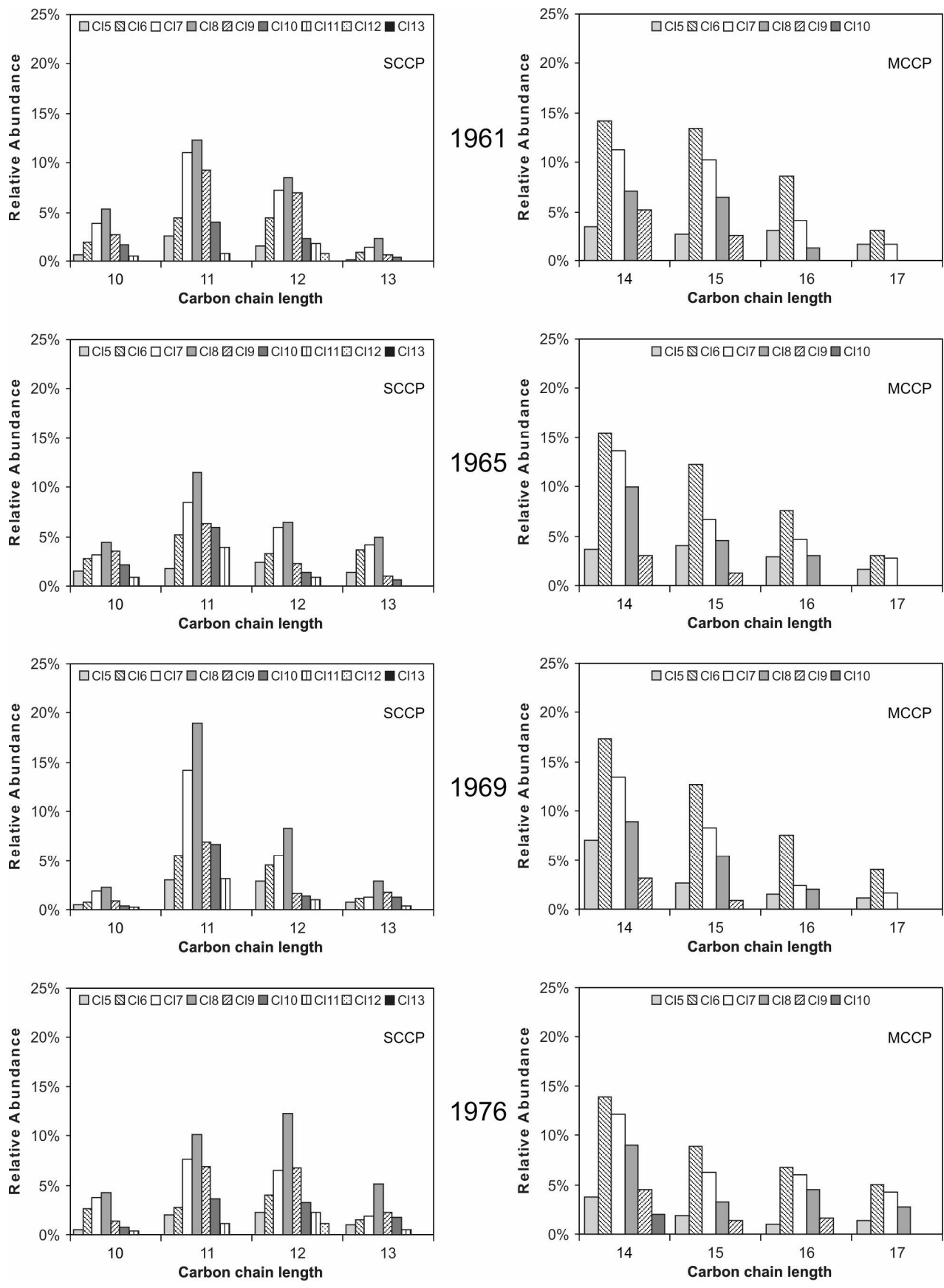
¹Empa, Swiss Federal Laboratories for Materials Testing and Research, Laboratory for Analytical Chemistry, Überlandstrasse 129, CH-8600 Dübendorf, Switzerland; ²University of Basel, Department of Chemistry, St. Johannis-Ring 19, CH-4056 Basel, Switzerland



8

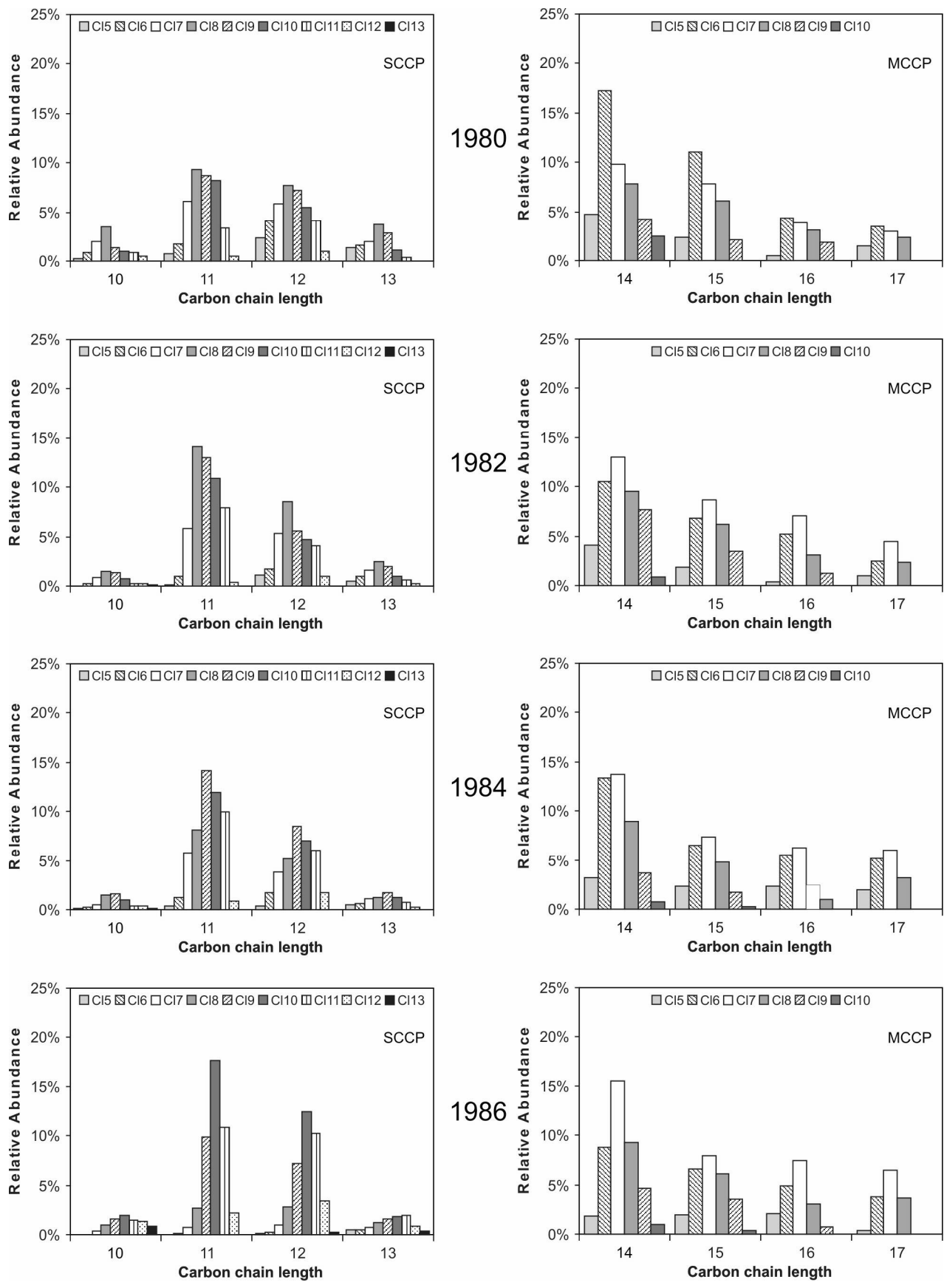
9 **FIGURE S1.** ^{137}Cs (A) and unsupported ^{210}Pb (B) activity as a function of depth for the dating of the
 10 sediment core.

11



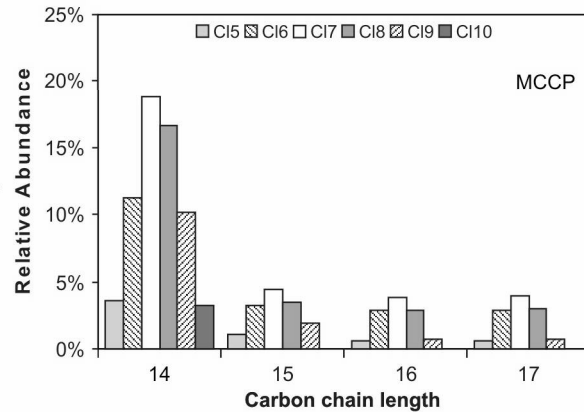
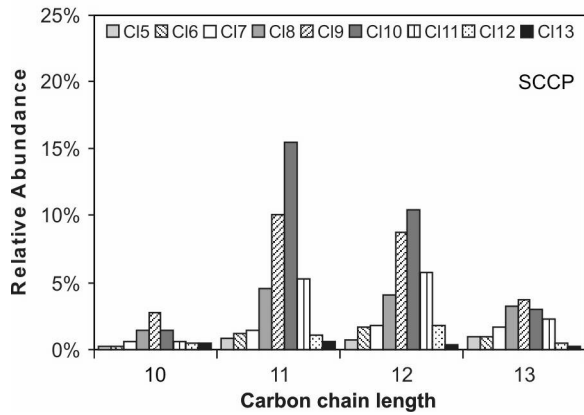
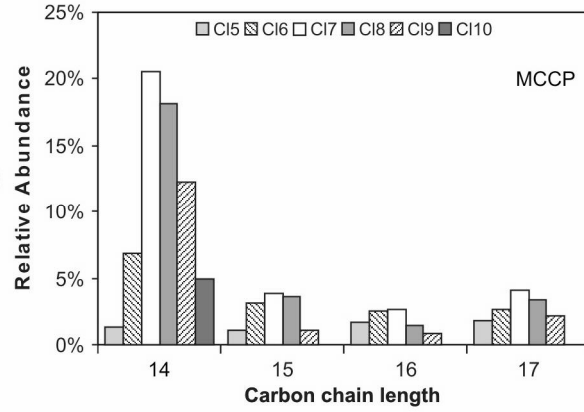
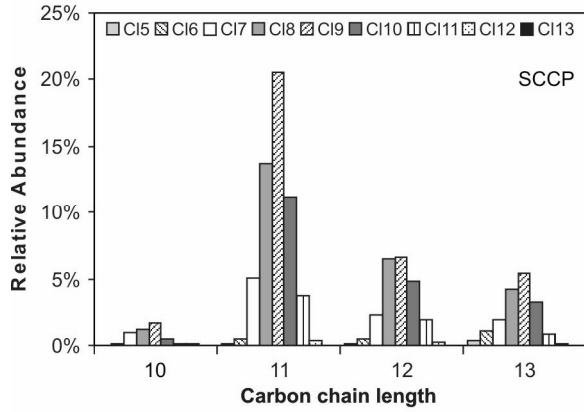
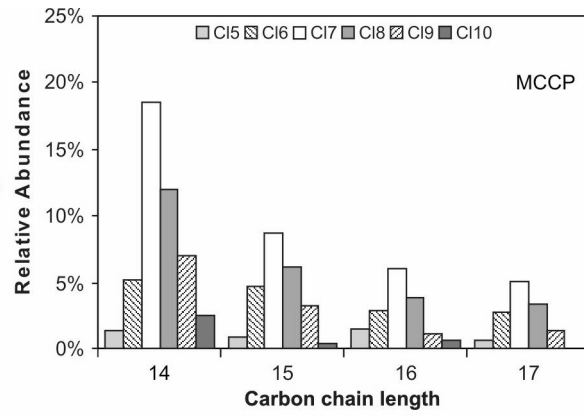
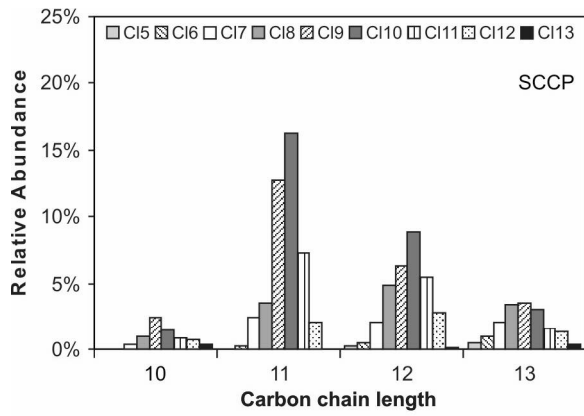
12

13 **FIGURE S2.** SCCP and MCCP congener group patterns of the 1961, 1965, 1969, and 1976 sediment
 14 slice from Lake Thun determined by GC-ECNI-LRMS.



15

16 **FIGURE S2.** SCCP and MCCP congener group patterns of the 1980, 1982, 1984, and 1986 sediment
 17 slice from Lake Thun determined by GC-ECNI-LRMS.



18

19 **SI FIGURE S3.** SCCP and MCCP congener group patterns of the 1993, 2000, and 2004 sediment slice
 20 from Lake Thun determined by GC-ECNI-LRMS.

21

22

23